



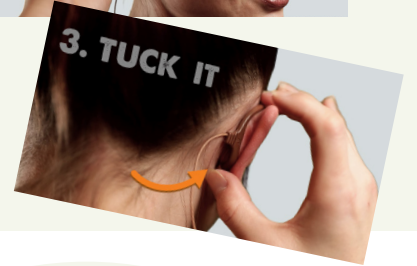
LEARN SELF-MIKING

Pick the perfect placement for your lavalier.



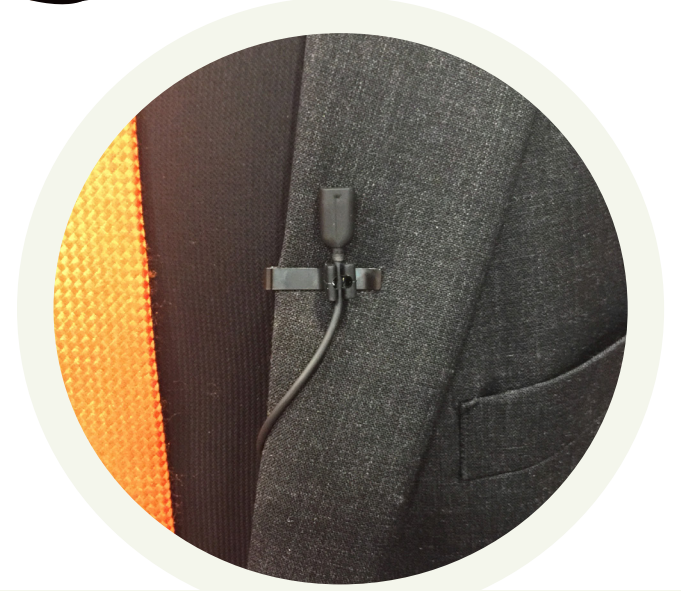
ON EAR

If placement is king, then placing a lavalier "on ear" reigns! EMBRACE mics offer concealment with precise placement from the mouth every time. This is an ideal tool for individuals who are self-miking.



ON LAPEL

Lapels are an obvious place for lavaliers, but traditional mic clips can cramp one's style—and even damage clothing. Upgrade any look with options like a magnet clip or a sleek SLIDER clip.



IN HIDING

Tape, clips, and mole skin can be used to secure microphones for concealing in clothing. Mic placement here can be tricky so go with the tools used by the pros.

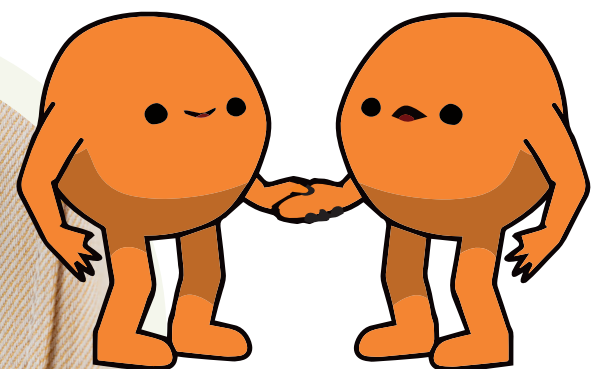
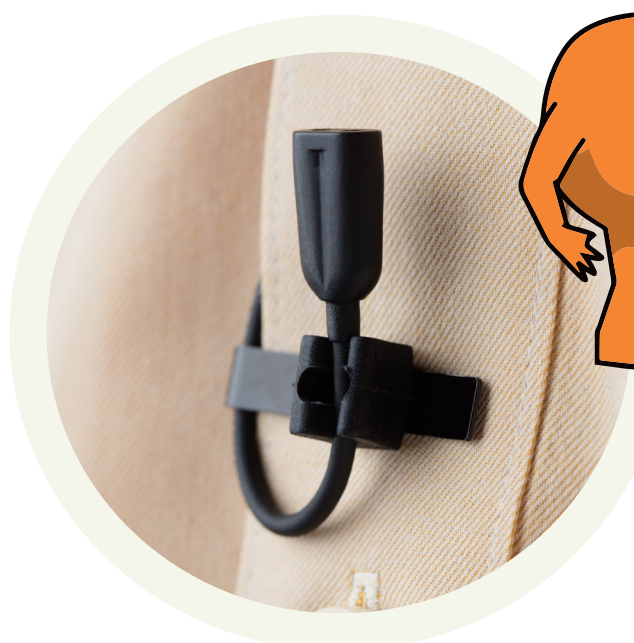
Try colored caps to camouflage the mic



IN TANDEM

(TWO MIKES!)

Some double mic setups use a headset mic with a lapel mic as the backup. Differences between the mics, however, can be audible. Ensure audio consistency when switching to the backup mic by using two **MATCHED** "MIKES in one housing. A mic with built-in backup offers cleaner cabling and fewer fitting and audio challenges.



Scan Me!

