

TECHNICAL NOTE

Date: Oct 14 (Rev 5 May 18)

ref TN324

Raised by: RW (Rev TC)

Distributed to: As Required



Soundtracs - Digico(UK) Ltd. unit 10 Silverglade Business Park Chessington Surrey KT9 2QL England
Tel: +44 1372 845600 Fax: +44 1372 845656 email: support@digiconsoles.com

Use of SD Series External Control for iPad®

DiGiCo SD Series console must be running software version v685 or above (this must have already been installed separately). v760 is the minimum recommended for non – Stealth Core 2 mixers. Refer to your local distributor for software update information.

Refer to the relevant release notes and manuals for use of general purpose OSC and other protocols remote control available in v987 onwards, not covered in this note.

Obtain the iPad App via the usual Apple® store route.

Note you may find there are two versions of the iPad App, one for use with up to V760 (non Stealth Core 2) only and the other, newer version, for use with all versions of mixer (from V685 upwards) including Core 2. Ensure you are using the newer version for all mixers.

Before proceeding further please read the DiGiCo SD iPad App User Manual included with the download package.

System Requirements for External Control and the DiGiCo SD App

iPad 2 or later running iOS 7+.

iOS 7.x is recommended for V1.2.0 of the DiGiCo SD App.

A wireless access point with a minimum wireless speed 150Mbps connected to the console ethernet port.

NOTE: If the console is equipped with Waves, the approved Waves Ethernet switch should be connected directly to the console and the Waves server.

The wireless access point should also be connected to the Waves Ethernet switch and not directly to the console or Waves server Ethernet port.

The wireless access point must have a static IP address in the same subnet as the console.

The iPad must be connected to the wireless access point and also configured with an IP address in the same subnet as the console.

To check the console's Local IP address please proceed with the installation of the External Control Functions below, connect the console to a wireless access point and then look at the bottom of the Master Screen / Setup / External Control Panel (see pictures below).

If the console's Local IP address shows 127.0.0.1, this is the default Local address and probably indicates that the console is not connected to another network device.

When a console leaves the factory its subnet mask is set to 255.255.255.0 for an SD7 and 255.255.0.0 for other console models.

Important Note for use with Apple devices running iOS 10+

Apple has changed WiFi settings in iOS 10.

For an App to be granted to WiFi connectivity, the iPad needs to actually think it's fully connected to the internet. It can be made to work just by the iOS seeing a DNS server. Any server number will do, as long as it is filled in, in your WiFi network settings.

Go to the WiFi network setting, on the right you find Static IP, on top of your usual IP address being 192.168.x.x , and your usual Subnet mask 255.255.0.0. (or 255.255.255.0 for SD7)

Enter a DNS setting : 8.8.8.8

Enter search engine : google.com.

Setup for use with the DiGiCo SD App

- 1) On the SD console open the Master Screen / Setup / External Control panel:
- 2) Enable **External Control** by pressing the button at the top of the panel
- 3) Press the **add device** button and select **DiGiCo Pad**
- 4) Enter a **Device Name** (user choice) for the device and then enter the IP Address of the iPad
- 5) Enter **Send** and **Receive** Port numbers for the console eg Send = 9000 and Receive = 8000

NOTE: If you enter multiple devices in this panel, they must all have unique Send and Receive Port numbers

Using version 1.2.0 of the DiGiCo SD App with SD Console V685 software, only one external device of a given type can be enabled at one time. (eg Only one DiGiCo Pad device can be enabled at one time)

- 6) Tick the **Enable** column for this device
- 7) Press the **Load** button in the bottom right corner of the panel and select the commands button for the relevant console. There are 2 different sets of commands, one for SD8, SD9 and SD11 and another for SD5, SD7 and SD10.

NOTE: Only one set of commands should be loaded at one time and if in doubt about which one is loaded, please press the Clear All button and then reload the relevant commands for your console.

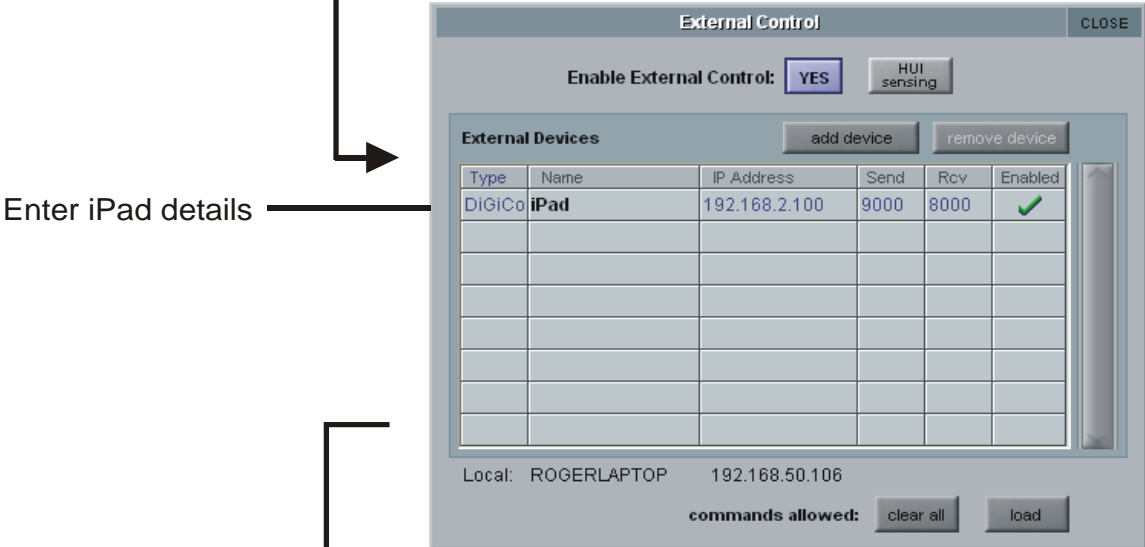
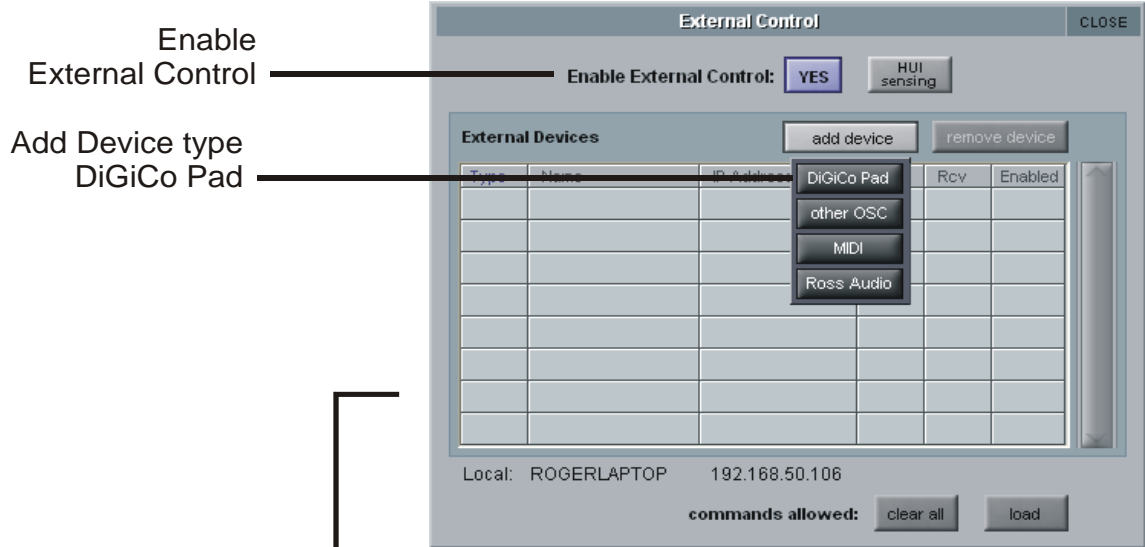
- 8) Take note of the console **Local (Console) IP Address** at the bottom of the panel as this information will have to be entered on the DiGiCo SD App Connect page.

Refer to screen pictures following:

NOTE: In the External Control panel in the images below there are several functions that are not yet implemented – these are:

HUI Sensing button (not yet implemented)

Add Device – other OSC and MIDI (not yet implemented)



Load iPad Commands for relevant console (only required on first setup)

